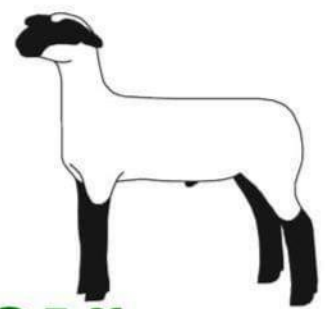


KELLY FARMS



3RD ANNUAL

CLUB LAMB AUCTION



Saturday, April 6th. 2019



**Barn Opens at 10 AM For Your Viewing
Live Auction Starts at NOON Sharp!**

Located at: 6511 Hill Rd., Bellevue, MI 49021

• **LUNCH WILL BE PROVIDED FOR YOUR CONVIENENCE** •

Kelly Farms & Club Lambs is a Member of the MCLA & MSPA

TERMS: Cash or Good Check. Lambs are to be paid for at end of Auction

Must register for buyers number with a current ID

Not Responsible for Accidents, Livestock or Items, Before, During or After Sold.

• **An Eaton Farm Bureau Feed Rep will be on Site with Feed Information, Guidance & Product for Purchase.** •

AT WHAT LEVEL DO YOU PLAY?

Premium Genetics Are Behind Our Proven Champions

2018: OCEANA COUNTY FAIR GRAND CHAMPION MARKET LAMB • BARRY COUNTY FAIR GRAND CHAMPION WETHER

• **CHEBOYGEN GRAND CHAMPION MARKET LAMB • CHEBOYGEN RESERVE CHAMPION EWE** •

• **EATON COUNTY FAIR GRAND CHAMPION CARCASS • BRANCH COUNTY FAIR 3RD OVER ALL** •

• **LAMB PLACED IN LOUISVILLE MARKET CLASS • TOO MANY CLASS WINNERS TO LIST !!**

KELLY FARMS LEAD SIRES



THE PROFESSOR



ALL ABOUT THE JUNK

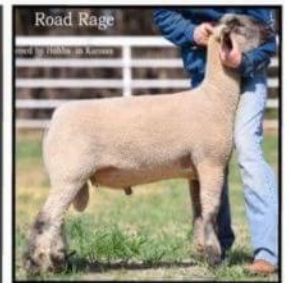


SNAKE EYES

**NEW for 2019
"Trump Stump"
"Road Rage"**



TRUMP STUMP



ROAD RAGE

NOTE! We will be Offering at Private Treaty after the Auction a Selection of our Lambs that are not yet weaned.

**KELLY FARMS & CLUB LAMBS
JACOB & MELISSA KELLY
11462 ASSYRIA HWY
BELLEVUE, MI 49021**

**FIND US ON FACEBOOK:
KELLY FARMS & CLUB LAMBS
"LIKE" OUR PAGE
CHECK FOR UPDATES & INFO**

**JACOB: 906-748-4749
FARM: 269-763-0224
LAMB CONSULTANT:
ROB CHAPMAN: 269-832-9622**